

*first-year*  
**ON CAMPUS**  
*living accommodations*

FALL TERM 2020 | SPRING TERM 2021



University of Pittsburgh

# Table of Contents

Welcome to Pitt .....	3
On Campus Housing Options for First-Year Students .....	4
Bruce Hall .....	9
Forbes Hall .....	10
Holland Hall .....	11
Litchfield Tower A .....	12
Litchfield Tower B .....	13
Litchfield Tower C .....	14
Lothrop Hall .....	15
Mark A. Nordenberg Hall .....	16
Sutherland Hall .....	18
Guaranteed Residence Hall Living .....	20
On Campus Housing Features .....	22





# Welcome to Pitt



Welcome to Pitt! We are so excited that you have chosen to attend the University of Pittsburgh and hope that you choose to make the University your home away from home!

Our campus in the Oakland neighborhood provides housing to more than 7,900 undergraduate students. Our students come from a variety of backgrounds and lifestyles, and they make a major contribution to the multicultural richness and diversity of the University community.

The “out-of-classroom” experiences that come with living on our urban campus are an important part of the education students receive at Pitt.



# On Campus Housing Options for First-Year Students

The purpose of this brochure is to provide you with an overview of each of the University's residence halls available for First-Year students along with the services that we provide to the students residing in them. All of our residence halls have been designed with you in mind!

## Upperclassmen Housing

The University also offers a variety of on-campus housing options for our upperclass students. Upperclassmen have the opportunity to live within a residence hall, suite, or apartment-style accommodation. If you are interested in learning more about these options, we encourage you to explore the Housing Services page of our website at [www.pc.pitt.edu](http://www.pc.pitt.edu). Click through our housing options, browse through photos, or take a virtual tour to learn more!

We encourage you to explore each page of this brochure to assist you with envisioning what life on campus could look like for you!

Students can also call, stop in, or log on to Panther Central's website, [www.pc.pitt.edu](http://www.pc.pitt.edu) at any time, day or night, for answers to their questions about on-campus living.





# Why Our Students Choose to Live On Campus

## FURNISHINGS AND MAINTENANCE

The University furnishes each residence hall room with carpeting, an extra-long twin bed, mattress, desk, chair, dresser, wardrobe or closet, and window curtains or blinds. Students will need to provide their own desk lamps and bed linens.

Basic cable television is provided in each room or suite in every residence hall by Comcast Inc. To receive all available channels, students must bring HD/digital ready televisions that are 720p or any variety of 1080i. Digital televisions must be equipped with QAMTuners.

Residents have access to Xfinity On Campus, a streaming service that provides On Demand and live TV content to any personal computer or mobile device. Through this service, students may record live TV and opt in for premium content. Visit [xfinityoncampus.com](http://xfinityoncampus.com) or download the Xfinity Stream app to access this service.

Residence hall rooms feature wireless connectivity via MyResNet.

Students are responsible for cleaning their own rooms and private bathrooms within suite-style accommodations. Our housekeeping staff cleans communal bathrooms, lounges, hallways, and stairwells.

For emergency repairs and maintenance problems, students should call Panther Central immediately. For routine maintenance, simply fill out an online maintenance request at the Panther Central subsection of the [my.pitt.edu](http://my.pitt.edu) student portal. Students also can submit an online request at [www.pc.pitt.edu](http://www.pc.pitt.edu).

## LAUNDRY

Each residence hall has washers and dryers that operate with Panther Funds. LaundryView, available in our larger buildings, allows students to see a live 3-D model of the laundry room from their computers so they always know when machines are available. For a complete list of buildings equipped with LaundryView, please visit [pc.pitt.edu/housing/amenities.php](http://pc.pitt.edu/housing/amenities.php).

## RESIDENT DIRECTORS AND RESIDENT ASSISTANTS

A Resident Director (RD) is on staff in each residence hall to assist students with educational, recreational, and disciplinary issues. In addition, Resident Assistants (RAs) also live on most floors in the residence halls. RAs are upperclass students eager to help by sharing their knowledge and experience.

## RESIDENT STUDENT ASSOCIATION

The Resident Student Association (RSA) is the governing body of students who live in the residence halls. RSA provides input to the University on any and all aspects of on-campus life.

## SECURITY

Each residence hall has a welcome desk staffed around the clock. When entering their residence halls, students must have the desk attendant swipe their Panther Cards through a card reader to verify their residence in that building. Your Panther Card is programmed to provide access only to your own residence hall. Residence hall visitors also must present a photo ID and must be escorted by the resident student at all times. The security staff in each residence hall also assists in enforcing the University's visitation and alcohol policies. You can find these policies in full in the Residential Handbook. The handbook is available to download and print at [www.pc.pitt.edu/publications](http://www.pc.pitt.edu/publications).

## PRINT STATIONS

Pitt Printing enables students to remotely send print jobs from any location to self-service print stations in locations across campus. There are self-service print stations located in ALL of our residence halls. For more information on Pitt Printing, please visit [www.technology.pitt.edu/service/printing](http://www.technology.pitt.edu/service/printing).

## LIVING LEARNING COMMUNITIES

Within several residence halls, we have designated floors as Living Learning Communities (LLCs). These floors are for students who wish to live with others who share a special academic or personal interest. In most cases, there are women's floors and men's floors available.

## OFFICE OF RESIDENCE LIFE

The Office of Residence Life in the William Pitt Union provides information and programs that support your academic goals and contribute to your personal growth and development while you are at Pitt. You may call the office at 412-648-1200 or visit [www.reslife.pitt.edu](http://www.reslife.pitt.edu).

## TRANSPORTATION

The University's bus and shuttle system serves each residence hall seven days a week, 24 hours a day. Our SafeRider services provide on-request drop-offs and on-call van transportation in the evening and early morning.

Visit [www.pc.pitt.edu/buses-shuttles](http://www.pc.pitt.edu/buses-shuttles) for more information.

## OTHER AMENITIES

Several of our residence halls offer a variety of other convenient services and amenities, including recreational facilities, fitness centers, community kitchens, computer centers, e-mail kiosks, coffee carts, and dining facilities.

Visit [www.pc.pitt.edu/housing-services](http://www.pc.pitt.edu/housing-services) for floor plans, room rates, and additional information about each residence option.













# Bruce Hall

The Reverend Robert Bruce served from 1822 to 1835 as the first chancellor of the Western University of Pennsylvania, which later became the University of Pittsburgh.

BRUCE HALL is part of Schenley Quadrangle. It houses 192 primarily first-year men and women in four and six-person suites. Each suite features a kitchenette with refrigerator and one or more private bathrooms. Laundry facilities are available on all floors, and residents have access to the Brackenridge Hall

Fitness Center. Bruce Hall is home to the Pitt Business First-Year Living Learning Community.

Forbes Street Market and the UPS Store are on the lowest level of Bruce Hall and are accessible from Forbes Avenue.

A Resident Director and nine Resident Assistants are on staff.



# forbes Hall



In 1758, General John Forbes defeated the French at Fort Duquesne and renamed the settlement Pittsburgh in honor of English Prime Minister William Pitt.

FORBES HALL is a residence hall located on Forbes Avenue about four blocks from the Litchfield Towers complex. It houses 232 first-year students in air-conditioned double rooms. Some of the doubles have adjoining semiprivate powder rooms. There are communal showers, a kitchenette, and a laundry area on each floor. There are internet e-mail kiosks and a student mail center in the lobby of Forbes Hall.

The First-Year Engineering Living Learning Community is located in Forbes Hall. Each wing of Forbes Hall has a study room. A large recreation room with fitness equipment is on the second floor, and a rooftop patio overlooks Forbes Avenue.

A Resident Director and eight Resident Assistants are on staff.



# Holland Hall



HOLLAND HALL is part of Schenley Quadrangle. The hall is divided into two wings—North and South—and houses 600 first-year men and women in single, double, triple, and quadruple accommodations.

There is a kitchenette on each floor as well as communal bathrooms and showers. The penthouse features a lounge, study area, and laundry facility, and residents have access to



the Brackenridge Hall Fitness Center.

The University Store on Fifth Avenue is on the ground floor of Holland Hall, accessible from either Schenley Quadrangle or from Fifth Avenue.

A Resident Director and 18 Resident Assistants are on staff.



# Litchfield Tower A



The Edward A. Litchfield Towers constitute the largest residential complex on the Pitt campus. The three towers accommodate 1,868 men and women in airconditioned singles and doubles.

The lobby of the three towers houses a variety of offices and facilities, including Panther Central, a student mail center, a fitness center, a print station, laundry facility, vending machines, e-mail kiosks, the Towers Lobby Lounge, and the Common Grounds coffee cart. The Market Central dining facility is located on the lower level, as is Market-to-Go and the Quick Zone convenience store.

A skywalk from the lobby spans over Forbes Avenue, providing convenient access to the academic buildings south of Forbes.

TOWER A houses 664 male and female first-year students.

All rooms are air-conditioned doubles. There are communal bathrooms and showers on each floor. A TV/study lounge is on every third floor.

A Resident Director and 18 Resident Assistants are on staff.

Tower A offers the option of 12-month first-year housing. For more details, please contact Panther Central at 412-648-1100.



# Litchfield Tower B



TOWER B is the largest of the three Litchfield Towers. It houses 769 first-year men and women in air-conditioned double rooms.

There are communal bathrooms and showers on each floor. A TV/study lounge is on every third floor.

A Resident Director and 21 Resident Assistants are on staff.



# Litchfield Tower C



TOWER C houses 435 First-Year and upperclass students, in air-conditioned single rooms. There are communal bathrooms and showers on each floor. A TV/study lounge is on every third floor. 12-Month Housing is available in Tower C. Visit [pc.pitt.edu](http://pc.pitt.edu) for more information.

A Resident Director and 15 Resident Assistants are on staff.





# Lothrop Hall

Sylvanus Lothrop was a prominent engineer and businessman who constructed the first locks and several major bridges on the Monongahela River in the 1830s and 1840s.

LOTHROP HALL is a residence hall in the heart of the renowned University of Pittsburgh Medical Center, about three blocks from the Litchfield Towers. Lothrop Hall houses 723 men and women, mostly in single and a few double rooms. Most rooms are equipped with a sink, and each wing has a communal bathroom and shower on each floor.

There is a lounge on every floor in Lothrop Hall, as well as a community kitchen, fitness center, laundry room, Starbucks Fresh Brew machine, and mail center on the lobby level.

A Resident Director and 15 Resident Assistants are on staff.



# Mark A. Nordenberg Hall



On October 26, 2012, the University of Pittsburgh Board of Trustees passed a resolution at its meeting to name a new residence hall the Mark A. Nordenberg Hall in addition to announcing the establishment of the Mark A. Nordenberg Scholarship Fund for undergraduate students. The surprise proclamations recognized the chancellor for his continued leadership of the University.

MARK A. NORDENBERG HALL houses 559 first-year men and women in air-conditioned doubles and triples. Each floor offers a large lounge area, smaller study lounges, communal bathrooms, and a laundry room. Special building features include a fitness center and two music practice rooms. The Health and Wellness Center, consisting of the Student Health Service and the University Counseling Center, is located on the second floor of the building, and is accessible from University

Place. The University Pharmacy, a PNC bank, and an AT&T store are located on the first floor, which is accessible from Fifth Avenue.

A Resident Director and 16 Resident Assistants are on staff in Mark A. Nordenberg Hall.







# Sutherland Hall



SUTHERLAND HALL is located adjacent to the Petersen Events Center on the upper campus, next to the major athletic facilities, and provides a view of the entire University. Sutherland Hall houses 740 first-year men and women. The air-conditioned rooms are mostly doubles with semi-private baths. There is a TV lounge or study room on each floor.

The east and west wings of Sutherland Hall share a newly renovated lobby comprising the Perch at Sutherland dining facility, the Hill O'Beans coffee cart, a newly renovated Quick Zone convenience store, a computer

center, student mail center.

There is a fitness center, community kitchen, laundry facility, and a meeting room on the ground floor of each wing.

In August of 2017, an additional Panther Central office, Panther Central Express, opened in the main lobby of Sutherland Hall! Currently, this office is open Monday through Friday, from 10am-6pm.





From 1924 to 1939, John Bain "Jock" Sutherland was the University of Pittsburgh's head football coach and arguably the best football coach of his time.

Sutherland is home to the First-Year University Honors College Living Learning Community.

A Resident Director and 16 Resident Assistants are on staff.

Gender Inclusive housing options are available within Sutherland Hall, allowing roommates to live together regardless of sex, gender, gender identity or expression. For more information on Gender Inclusive housing, please contact Panther Central.





## Guaranteed Residence Hall Living

Prospective first-year students who are admitted through Admissions and Financial Aid for the fall term and pay their \$300 enrollment fee by May 1 and their \$325 housing deposit by their designated due date are guaranteed on-campus housing. This guarantee is good for three years, provided that all housing application and deposit deadlines for each subsequent year have been met.

First-Year students who pay their deposits after the deadline will lose their housing guarantee and will be assigned rooms as they become available.

## Non-Guaranteed Housing Process

If you pay your enrollment deposit after May 1, or if you miss the deadline included in your housing packet, you will not be guaranteed a place in on-campus housing. However, we have another option for you! We have a robust wait list that is very successful at getting students a place to live on campus. You will need to pay your housing deposit, sign the contract, and submit the application online. Then, as rooms become available, Panther Central will review the wait list in order of application date and offer open rooms to students. You should expect to hear from us over the summer about your assignment, if we are able to offer you a room.

## Room and Roommate Preferences

When you complete your housing application, you can indicate the type of accommodation you desire. Although we will make a sincere effort to satisfy your request, we are not always able to grant your preferences.

If you wish to request a particular roommate, you must both list each other on your applications. If we do not receive your applications within a reasonable period of time, we cannot guarantee that we will be able to honor your roommate preference. Also, your participation in a Living Learning Community may preclude your choosing a roommate. In order to receive information on a Living Learning Community, please indicate your interest on the application.

You can find more specific information regarding the terms of your Housing/Dining Services contract in the Housing/Dining Services information packet that accompanies your contract as well as in the Residential Handbook or online at [www.pc.pitt.edu/publications](http://www.pc.pitt.edu/publications).

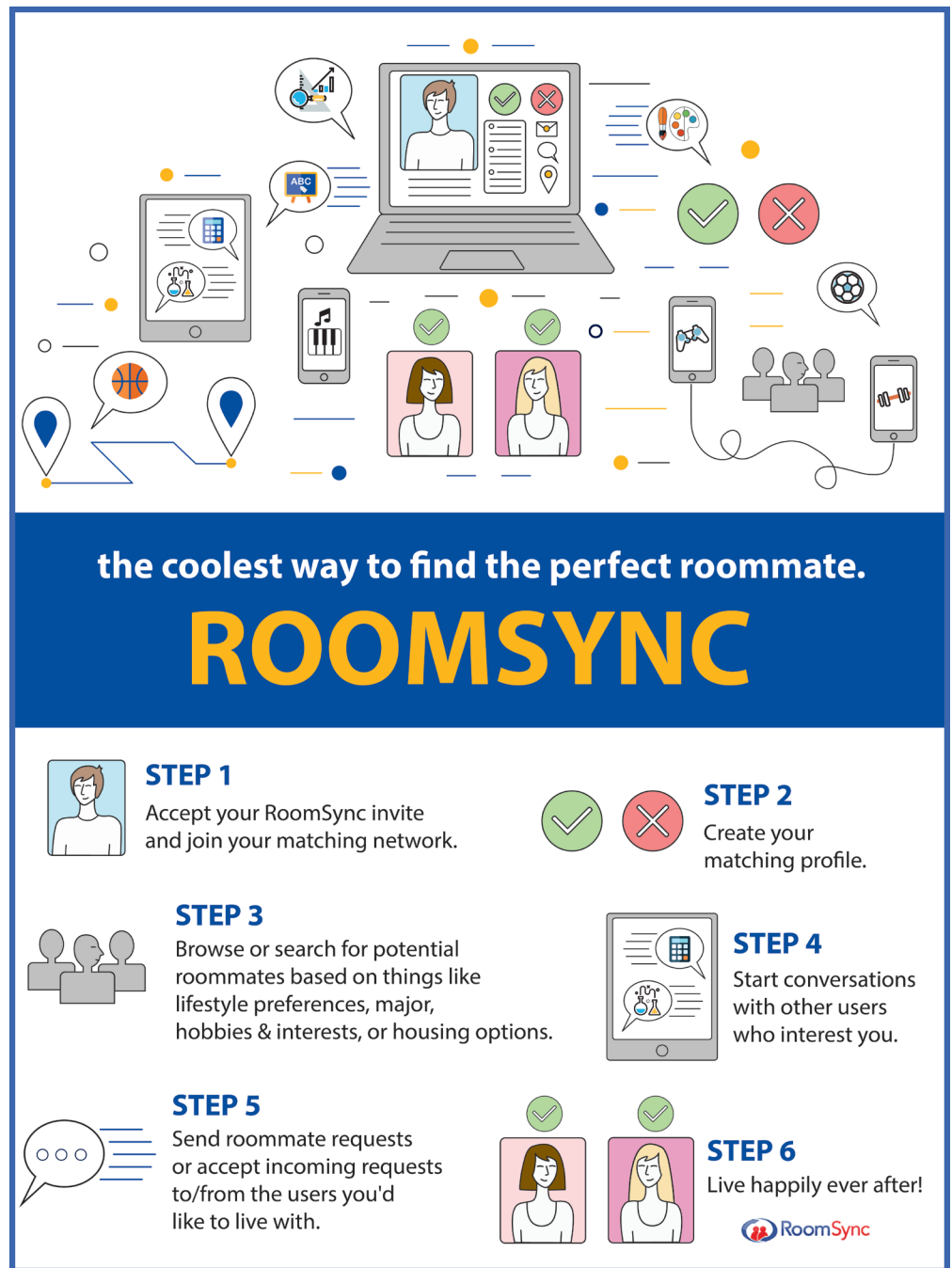




# RoomSync

Speaking of roommates, do you want to find someone who will be a good fit? We want to help you! Once you've completed your housing application, you will be able to access RoomSync—a private Facebook application which allows students to search for roommates based on interests, lifestyles, majors, and mutual friends. Each week, Panther Central sends RoomSync instructions to students who have recently completed the housing application in its entirety. In order to be paired with another student, you must both “match” (i.e. select each other) via RoomSync. Your match is then sent to Panther Central as a roommate request.

RoomSync is currently available to incoming first-year students only. Participating students should continue to check their Pitt email regularly for RoomSync updates. If you don't find your “match” through RoomSync, don't worry!



Our housing application includes several roommate matching questions of its own that will properly identify and sort a compatible roommate for you.



# On Campus Housing Features

	Number of Residents	Gender	Resident Classes <sup>1</sup>	Residence Life Satff <sup>2</sup>	Room Types	Private Semiprivate Baths	Communal Baths/ Showers	Laundry Facilities <sup>3</sup>	Air Conditioning	Cable/ Network Access	Fitness Center <sup>4</sup>	12-month Housing	Secured Entrance
<b>Bruce</b>	192	M&W	Upper/ First	RD, RA	Suites	X		All Floors		X	X		X
<b>Forbes</b>	232	M&W	First	RD, RA	Doubles	X	X	All Floors	X	X	X		X
<b>Holland</b>	600	M&W	First	RD, RA	Sgls, Dbls, Trips, Quads	X	X	Floor 11		X	X		X
<b>Litchfield Tower A</b>	664	M&W	First	RD, RA	Doubles		X	Lobby	X	X	X	X	X
<b>Litchfield Tower B</b>	769	M&W	First	RD, RA	Doubles		X	Lobby	X	X	X		X
<b>Litchfield Tower C</b>	435	M&W	Upper/ First	RD, RA	Singles		X	Lobby	X	X	X	X	X
<b>Lothrop</b>	723	M&W	Upper/ First	RD, RA	Singles, Doubles		X	Lobby		X	X		X
<b>Mark A. Nordenberg</b>	559	M&W	First	RD, RA	Doubles, Triples		X	All Floors	X	X	X		X
<b>Sutherland</b>	740	M, W & GI	First	RD, RA	Doubles	X		Lobby	X	X	X		X

<sup>1</sup>Primary class(es) living in hall:  
First = First Year Students

<sup>2</sup>RD = Resident Director  
RA = Resident Assistant

<sup>3</sup>Laundry facilities located on select floors, all floors, or in lobby

W = Women's Floors  
M = Men's Floors  
GI = Gender Inclusive

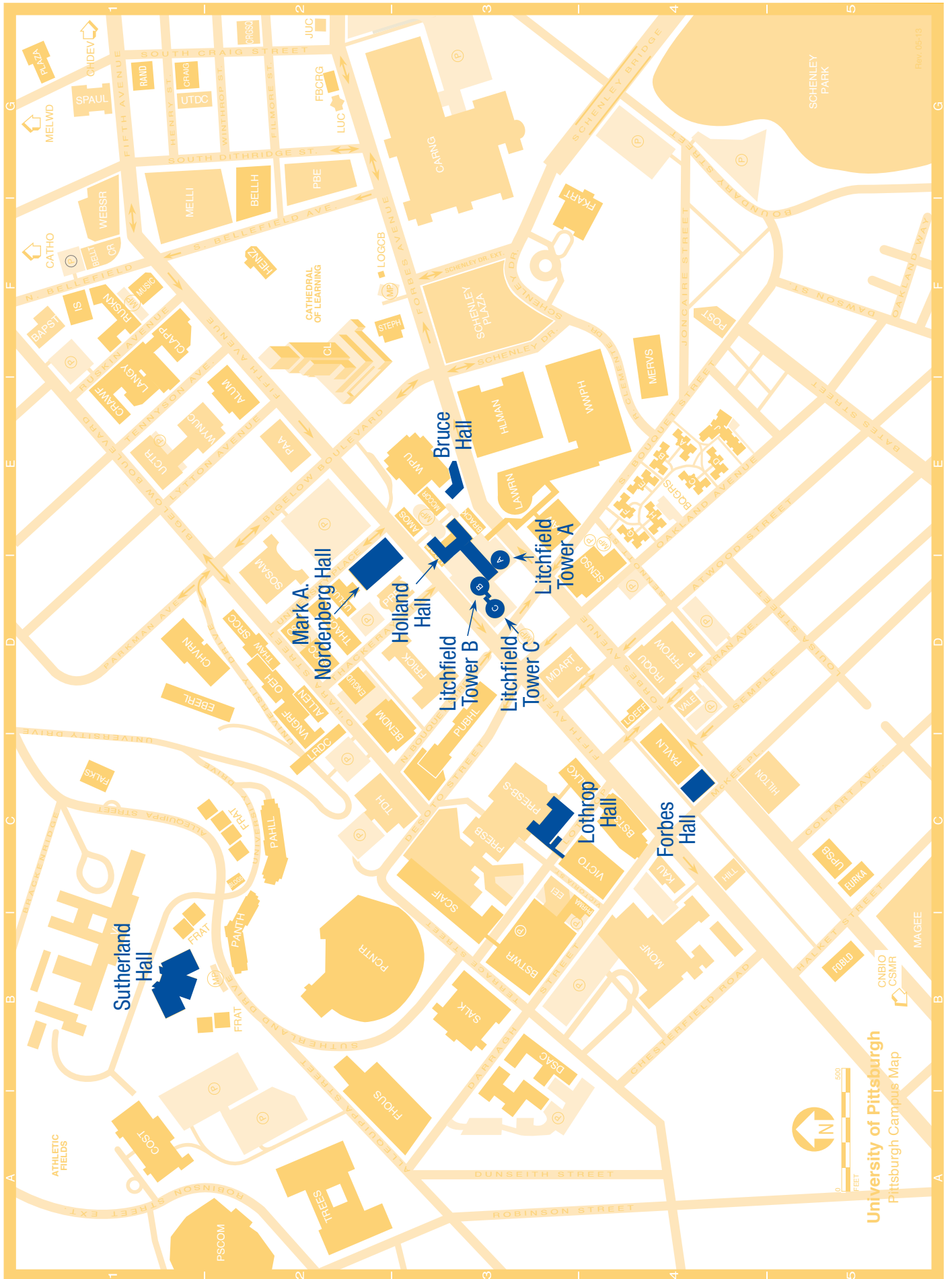
<sup>4</sup>Amos, Bruce, McCormick and Holland  
Located in Brackenridge Hall

Tower B and C  
Located in Litchfield Tower A

Interested in taking a virtual tour through some of our residence halls, apartments and on-campus dining locations?

Visit <http://youvis.it/I2GpAE> and begin the Pitt virtual experience!









*We're at your service*

Whatever questions you have about  
campus services turn to Panther Central first.

Call, stop in, or log on.  
We're the place for answers.

*follow us!*



Litchfield Towers Lobby | Sutherland Lobby

412-648-1100

panthercentral@pitt.edu | @PantherCentralPitt

The University of Pittsburgh is an affirmative action, equal opportunity institution.